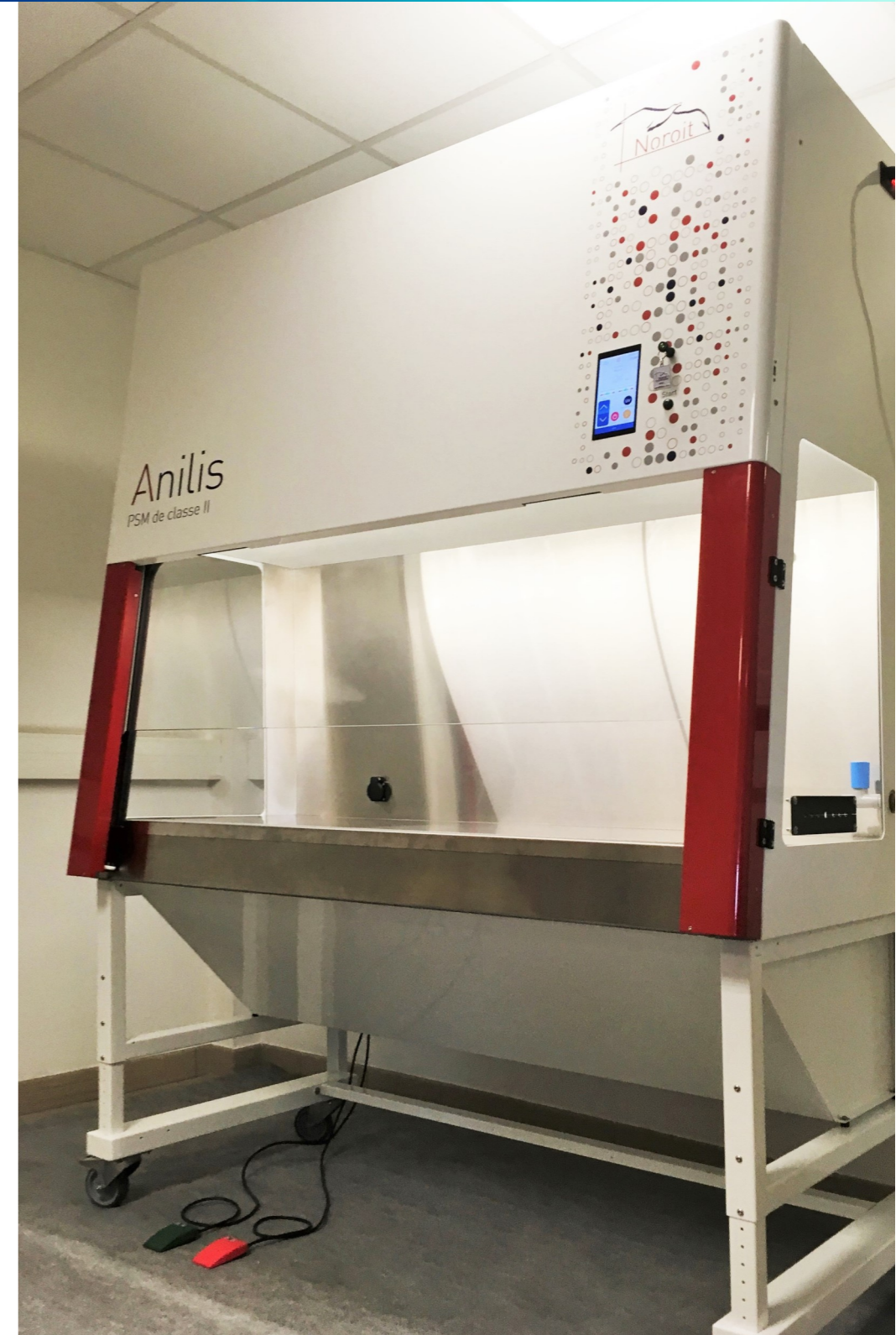
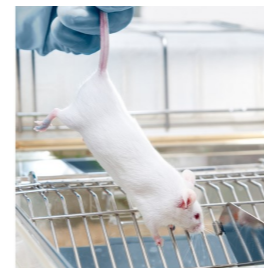




Class II safety cabinets and
changing stations

Anilis

Model	Anilis 900	Anilis 1200	Anilis 1500	Anilis 1800
Internal dimensions (W x D x H), mm	980 x 570 x 650	1 285 x 570 x 650	1 590 x 570 x 650	1 895 x 570 x 650
External dimensions, on electric stand, (W x D x H), mm	1 145 x 875 x 2 350 (position haute)	1 450 x 875 x 2 350 (position haute)	1 755 x 875 x 2 350 (position haute)	2 060 x 875 x 2 350 (position haute)
	1 145 x 875 x 1 995 (position basse)	1 450 x 875 x 1 995 (position basse)	1 755 x 875 x 1 995 (position basse)	2 060 x 875 x 1 995 (position basse)
Weight	205 kg	230 kg	280 kg	310 kg
Lightness	> 1300 lux			
Protection of the animales / the user	ISO5 / EN 12469			
Front air barrier average velocity	0,53 meter/sec			
Voltage - frequency	230V±10% - 50 Hz			



Noroit is committed to eco-design and production:



- Low energy building production plant,
- Recycling of 95% of production waste,
- Collecting and treatment of 100% of chemical waste (Noroit is member of the « Click Eco » network,),
- Local subcontracting,
- Collecting and reuse of packaging.

Noroit

13 rue des Coteaux de Grand Lieu - 44830 Bouaye - FRANCE
Tel: 0033 / 240 501 277 - contact@noroitlabo.com

www.noroitlabo.com



Anilis

FOR CLASSY MICE!

The Anilis range of biosafety cabinets and changing stations is especially designed to strongly protect the zotechnicians and the manipulated rodents during the whole process of bedding replacement.

Optimal protection of the animals, the user and the environment

Complies with the EN12469, Class 100-ISO5, Prefilter cartridge, installed below the work tray, HEPA H14 filters, Airflows direct measurement by anemometers, Visual and audible alarms.

Applications

Soiled litter disposal and replacement, Manipulation of contaminated rodents.

Additional range

Biological or chemical protection:

- Active carbon filter at the exhaust,
- Active carbon filter in the air recirculation network,
- Double exhaust HEPA filter,
- HEPA filter in the air recirculation network.

Configuration according to your needs

Adaptation, customisation, Many possible options on request.

Contact us!



TECHNICAL SPECIFICATIONS

10° angled and sliding front window, made of laminated glass

An ergonomically designed workplace is of utmost importance.

Chamber and work tray made of 304L brushed stainless steel

High resistance to cleaning and disinfecting products.

Two different working positions

22 cm front opening, for biosafety cabinet and use,
30 cm front opening, dedicated to cage changing.

Prefilter cartridges installed below the work tray

To reduce clogging of the absolute filters,
Can be replaced by the user,
No tools needed.

Transparent side windows

For a bright and open environment.

The work tray is bowl shaped

For a very comfortable arms position.

LEDs strip bright and smooth white light

To avoid bothersome reflections.



PATENTED DESIGN FOR CLEANING THE FRONT WINDOW: Twist & Clean®



INNOVATIVE & ORIGINAL DESIGN!

1. Open the side « wings »,
2. Rotate the front window to the horizontal position,

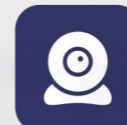
COMFORTABLE POSITION, SAFE, COMPLETE CLEANING.



SOLIS CONNECTED: Open to the world !



CALCULATOR
Simple and convenient!



WEBCAM
Record and share your manipulations.



USB
Data storing (photos, vidéos and music).



MUSIC
Privately listen to your own playlist.



ELECTRIC STAND

- 2 working positions: both sitting and standing positions,
- 3 linear electric axes are used to position the unit to the required height.



CUSTOMISATION

- Additional electrical outlets,
- Fluid ports and gas taps,
- Cable tight ports,
- UV-germicide decontamination,
- Grid against swab suction,
- Double Door Transfer Port.



CONTROL PEDALS

- For opening or to closing the window,
- Install your products inside the MSC, even with your hands full!



QUALIFICATION

- HEPA filter efficiency test,
- Particles counting,
- Airflow mapping,
- Alarms control,
- Ventilation control,
- Mechanical control.