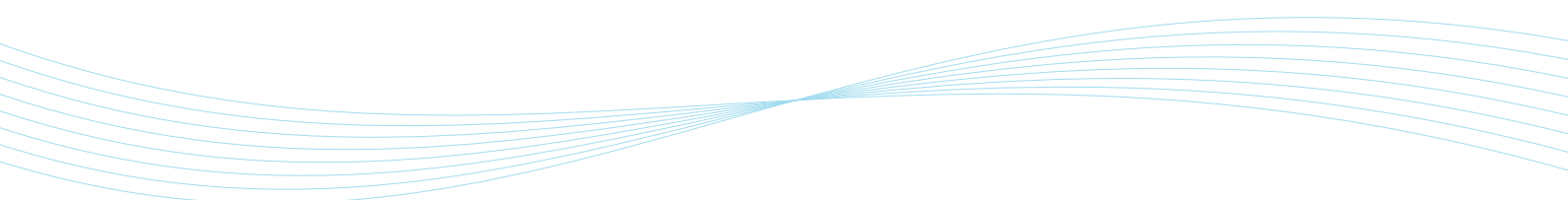




evoqua
WATER TECHNOLOGIES

CATALOGUE 2023

VALID: 01.01. TO 31.12.2023



Content

DQ/IQ/OQ/PQ Workbook	3
Mixed bed deionizers	4
LaboStar systems	6
Ultra Clear TP systems	8*
Module sets	10
Communication Interface Module	11
LaboStar RO DI systems	12
Ultra Clear RO, RO DI, RO EDI systems	14*
Ultra Clear RO tanks	16
Softeners	18
Ultra Clear RO 150 Basic	19
Protegra OF systems	20
Protegra CS RO systems	22
Protegra CS Pro RO EDI systems	23*
Storage tanks	24
Redundancy circuits	26
Submersible lamps	27
UV flow lamps	28
Filters	29
Accessories	30
Consumables for older versions	31

* **IONPURE** technology is used here.

DQ / IQ / OQ / PQ Workbook

LABOSTAR AND ULTRA CLEAR™ PURE WATER SYSTEMS

W3T227468	DQ,IQ;OQ;PQ	VA
W3T227469	IQ;OQ	VA

LABOSTAR AND ULTRA CLEAR™ TWF ULTRA PURE WATER SYSTEMS

W3T227470	DQ,IQ;OQ;PQ	VA
W3T227501	IQ;OQ	VA

LABOSTAR AND ULTRA CLEAR™ ULTRA PURE WATER SYSTEMS

W3T227502	DQ,IQ;OQ;PQ	VA
W3T227503	IQ;OQ	VA

PROTEGRA RO SYSTEMS

W3T227504	DQ,IQ;OQ;PQ	VA
W3T227505	IQ;OQ	VA

PROTEGRA RO EDI SYSTEMS

W3T227506	DQ,IQ;OQ;PQ	VA
W3T227507	IQ;OQ	VA

SPECIAL SYSTEMS

W3T227509	IQ;OQ	VA
-----------	-------	----



Mixed bed deionizers

HIGHEST QUALITY - ENVIRONMENTALLY FRIENDLY

These high-quality ion exchangers made of stainless steel (1.4571) are filled with MB400 resin and can be operated with up to 10 bar working pressure.

The **water flow, optimised** by us, ensures excellent utilisation of the resin bed. Optionally, you can connect the cartridges with the proven stainless steel quick couplings (SK), 1 1/4" or 3/4" screw connection..

WITH QUICK COUPLING (PRODUCT GROUP W2)

		2000 SK	2800 SK	4500 SK	6200 SK	7000 SK	11000 SK	15000 SK
Capacity*	l	2000	2800	4500	6200	7000	11000	15000
Capacity max.	l/h	450	800	1000	1000	1500	1500	1500
Resin amount	l	13	19	30	40	55	75	100
Pressure max.	bar	10	10	10	10	10	10	10
Dimensions								
Diameter	mm	230	230	230	230	360	360	360
Tank height	mm	410	570	785	1025	660	980	1111
Hight incl. meas. device	mm	515	675	886	1125	780	980	1230
Shipping weight	kg	18	24	34	48	52	68	92
P. No. w/o resin		W3T197592	W3T199678	W3T199679	W3T199673	W3T199174	W3T199730	W3T212418
Part No. w/resin		W3T199735	W3T199172	W3T199736	W3T198029	W3T199173	W3T198027	W3T199789

WITH TUBE FITTING (PRODUCT GROUP W2)

		2000 3/4"	2800 3/4"	4500 3/4"	6200 3/4"	7000 1 1/4"	11000 1 1/4"	15000 1 1/4"
Capacity*	l	2000	2800	4500	6200	7000	11000	15000
Capacity max.	l/h	450	800	1000	1000	2000	2500	3000
Pressure max.	bar	10	10	10	10	10	10	10
Dimensions								
Diameter	mm	230	230	230	230	360	360	360
Tank height	mm	410	570	785	1025	660	980	1111
Hight incl. meas. device	mm	530	690	900	1140	710	910	1160
Shipping weight	kg	18	24	34	48	53	69	93
P. No. w/o resin		W3T198645	W3T198642	W3T198641	W3T198361	W3T199406	W3T198653	W3T198222
Part No. w/resin		W3T199409	W3T198640	W3T198639	W3T198638	W3T199061	W3T197829	W3T198437

* Capacity per regeneration at total salinity 1,79 mol/m³, corresponding to 10°d, 1°d GSG has a conductivity of approx. 30 µS/cm



Water guard



Conversion kit



Conductivity meter P2/30

ACCESSORIES FOR MIXED BED DEIONIZER

W3T198266	Conductivity meter P2/30 SK, 0-20 µS/cm	W2
W3T198373	Conductivity meter P2/30 3/4", 0-20 µS/cm	W2
W3T197840	Conductivity meter P1/50 WA, 0-50 µS/cm	W2
W3T199245	Conductivity meter LFW200 digital, 0-200 µS/cm	W2
W2T808004	Water guard with sensor R 3/4" i. Ms, 6,8 m ³ /h; 230 V tube fitting	W5
W2T828181	Water guard R 3/4" i/a, Ms, KV 1.2 m ³ /h, 230 V	W5
W3T197588	Solenoid valve, 3/4" i/a tube fitting, currentless closed, 220 V/50 Hz	W5
W3T199037	Conductivity electrode c = 0.2; without TC, 3/4" i/a	W5
W3T198767	Conductivity electrode c = 0.2; without TC, 3/4" a/SK	W5
W3T331762	Conductivity electrode (c = 0.2), without TC, AG 1/2"	W5
W2T525642	Conductivity electrode (c=0.2), TC, G 1/2" a for LFW200	W5
W3T347290	VB4 Distribution block, POM, 4 valves	W5
W3T204904	Float switch 250 V, 10 A	W5
W3T403968	Flushing filter/Backflow preventer combi 3/4"	W5
W2T844284	Flushing filter/G 3/4", 10 bar, sieve 0,11 mm	W5
W3T198259	SK Conversion kit; Cartridge and hose set 3/4" thread connector to Quick-fit coupler	W2
W3T197586	SK Conversion kit; Cartridge 3/4" thread connector to Quick-fit coupler	W2
W2T524664	Mixed bed resin MB 400, 0,5 val/l, 25 l bag/Price per Liter	W5

HOSE SETS WITH QUICK COUPLING (SK)

W3T199302	For SG 2000 - SG 15000 SK, 2 x 1,5 m, quick coupling for P2/30-SK only	W2
W3T199289	For SG 2000 - SG 15000 SK with electrode, 2 x 1.5 m, quick coupling, Electrode (c = 0.2) for P1/50 or LFW200	W2
W3T199288	For SG 2000 - SG 15000 SK with electrode, TC, 2 x 1.5 m, quick coupling, Electrode (c = 0.2) for LFW200 only	W2

HOSE SETS WITH TUBE FITTING

W3T198103	For SG 2000 - SG 6200 3/4", 2 x 1.5 m, 3/4"-connection fitting only for P2/30	W2
W3T197682	For SG 2000 - SG 6200 3/4" with electrode, 2 x 1.5 m, 3/4"-connection fitting, electrode (c = 0.2) for P1/50, LFW200	W2
W3T198041	For SG 2000 - SG 6200 3/4" with electrode, TC, 2 x 1.5 m, 3/4"-connection fitting, electrode (c = 0.2) for LFW200 only	W2
W3T199844	For SG 7000 - SG 15000 1 1/4" with electrode 2 x 1.5 m, 1 1/4"-connection fitting, electrode (c = 0.2) for P1/50, LFW 200	W2
W3T198267	For SG 7000 - SG 15000 1 1/4" with electrode, TC, 2 x 1.5 m, 1 1/4"-connection fitting, electrode (c = 0.2) for LFW200 only	W2

TC: temperature compensated



LaboStar PRO TWF + 30 l tank

Ultra pure water systems

LABOSTAR® PRO AND PRO TWF

The LaboStar Pro ultra pure water system is **extremely space-saving** and is used for the **cost-effective** production of analytically pure water. Deionised water, distilled water or permeate from a reverse osmosis system is required as feed water. The LaboStar PRO TWF systems produce ultra pure water directly from drinking water.



LaboStar PRO



LaboStar + 60 l tank

Part No.	Name	P. Gr.
W3T324339	LaboStar PRO DI 2	W3
W3T324340	LaboStar PRO UV 2	W3
W3T409684	LaboStar PRO DI 4 mobile system	W3
W3T324491	LaboStar PRO UV 4 mobile system	W3
W3T324337	LaboStar PRO TWF	W3
W3T324338	LaboStar PRO TWF UV	W3

SPECIFICATIONS

	LaboStar Pro DI 2	LaboStar Pro UV 2	LaboStar Pro DI 4	LaboStar Pro UV 4	LaboStar Pro TWF	LaboStar Pro TWF UV
Ultra pure water						
Delivery flow rate (l/min)	1.5*1	1.5*1	1.5*1	1.5*1	1.2	1.2
Conductivity (µS/cm)	0.055	0.055	0.055	0.055	0.055	0.055
Resistivity (MΩ-cm)	18.2	18.2	18.2	18.2	18.2	18.2
TOC (ppb)	5 - 10	1 - 5	5 - 10	1 - 5	5 - 10	1 - 5
Bacteria (KbE/ml)	< 0.1*2	< 0.1*2	< 0.1*2	< 0.1*2	< 0.1*2	< 0.1*2
Endotoxins (EU/ml)	< 0.001*3	< 0.001*3	< 0.001*3	< 0.001*3	< 0.001*3	< 0.001*3
Particles > 0,2 µm/ml	< 1	< 1	< 1	< 1	< 1	< 1
Feed water						
Pressure (bar)	0,1 - 6	0,1 - 6	-	-	3 - 5	3 - 5
Initial conductivity (µS/cm)	< 20	< 20	< 20	< 20	< 1400	< 1400
Silt density index (SDI)	< 3	< 3	< 3	< 3	< 3	< 3
TOC (ppb)	< 50	< 50	< 50	< 50	< 1000	< 1000
Free chlorine (mg/l)	< 0,1	< 0,1	< 0,1	< 0,1	< 0,1	< 0,1
Total iron (mg/l)	< 0,1	< 0,1	< 0,1	< 0,1	< 0,1	< 0,1
CO2 (mg/l)	< 15*3	< 15*3	< 15*3	< 15*3	< 20	< 20
Water temp. (°C)	5 - 30	5 - 30	5 - 30	5 - 30	5 - 30	5 - 30
Ambient temperature (°C)	5 - 35	5 - 35	5 - 35	5 - 35	5 - 35	5 - 35

*1 : depends on primary pressure, min. 1.0 LPM > 0,1 bar inlet pressure

*2 : With use of sterile filter W3T199279 or W3T199209 (see accessories) with Bubble point test: pressure > 3.45 bar (with water) resp. 1.10 bar (with 50% IPA)

*3 : with charged sterile filter (the water was free of any detectable RNase or DNase)

ACCESSORIES FOR LABOSTAR AND LABOSTAR PRO

W2T897953	AQUASTOP 230 VAC/50-60 Hz	water guard	W5
W3T197588	Solenoid valve 220 V/50 Hz DN 10		W5
W3T199556	Wall bracket kit for LaboStar		W5
W3T324494	30 l extension tank for LaboStar PRO TWF		W5
W3T324495	60 l extension tank for LaboStar PRO TWF		W5
W3T314413	Degassing unit max. 150 l/h*		W5
W3T428768	Communication interface module (LAB)		W5

* Must be operated in combination with a filter housing including filter cartridge.

CONSUMABLES FOR LABOSTAR PRO

W3T197613	Pretreatment module AMB		W5
W3T197621	Pretreatment module DTO applications with low TOC area		W5
W3T197618	Pretreatment module VMD for low inorganic application		W5
W3T197694	Polishing module MFIID applications with low TOC area		W5
W3T199853	Polishing module ILT for low inorganic application		W5
W3T197620	RO module 10 l/h		W5
W2T558521	UV lamp 14 Watt (incl. TOC systems) (status as of 2014)		W5
W3T199768	Desinfection kit for ultra pure water systems, content 3 syringes		W5
W3T199880	Vent filter for tank	Pack of 3	W5
W3T199279	Sterile filter 0.2 µm with endotoxin retention	Pack of 3	W5
W3T199209	Sterile filter 0.2 µm	Pack of 3	W5

CONSUMABLES FOR ALL LABOSTAR MODELS UNTIL APRIL 2015

W3T199208	Pretreatment module		W5
W3T199854	Polishing module HP1 for low inorganic application		W5
W3T199773	Polishing module HP2 for low organic application		W5
W3T198255	DI module		W5
W3T199951	UV replacement lamp		W5
W3T199880	Vent filter for tank	Pack of 3	W5
W3T199279	Sterile filter 0.2 µm with endotoxin retention	Pack of 3	W5
W3T199209	Sterile filter 0.2 µm	Pack of 3	W5
W3T199772	Tube with adapter and disinfectant		W5



Ultra Clear TP ED

Ultra pure water systems

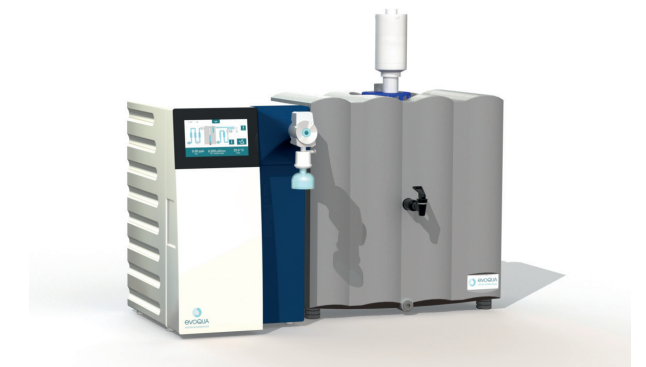
ULTRA CLEAR TOUCHPANEL SYSTEMS

The new Ultra Clear™ TP ED series is equipped with an **electronic dispenser** for precise, volume-controlled dosing of up to **2 l/min** of ultra pure water.

The improved and **intuitive software** allows an easy-to-use dispensing process - directly and without delay. A new printer and Modbus interface integrates data transfer into your existing system.



Display and dispenser in detail



System with 60 l tank

ULTRA CLEAR TOUCHPANEL

Part No.	Model	Configuration	Capacity
W3T276073	Ultra Clear TP ED UV TM	Polisher	W3
W3T276074	Ultra Clear TP ED UV UF TM	Polisher	W3
W3T276075	Ultra Clear TP ED 10 TWF 30 UV TM	TWF	W3
W3T276076	Ultra Clear TP ED 10 TWF 30 UV UF TM	TWF	W3
W3T276077	Ultra Clear TP ED 10 TWF 60 UV TM	TWF	W3
W3T276078	Ultra Clear TP ED 10 TWF 60 UV UF TM	TWF	W3
W3T276079	Ultra Clear TP ED 20 TWF EDI 30 UV TM	TWF EDI	W3
W3T276080	Ultra Clear TP ED 20 TWF EDI 30 UV UF TM	TWF EDI	W3
W3T276081	Ultra Clear TP ED 20 TWF EDI 60 UV TM	TWF EDI	W3
W3T276082	Ultra Clear TP ED 20 TWF EDI 60 UV UF TM	TWF EDI	W3
W3T276084	Ultra Clear TP ED 20 TWF EDI 80 UV UF TM	TWF EDI	W3

ACCESSORIES

Part No.	Description	Capacity
W3T403968	Flushing filter/Backflow preventer combi 3/4"	W5
W2T897953	AQUASTOP 230 VAC/50-60 Hz	water guard
W3T197588	Solenoid valve 220 V/50 Hz; NC; DN10; 3/4" i/a	
W3T199991	Wall bracket for 30 l tank	W5
W3T197563	Wall bracket for 60 l tank	W5
W3T314413	Degassing unit (for example for CO2 degassing)	W5
W3T199279	Sterile filter 0.2 µm, with endotoxin retention (pack of 3)	W5
W3T199768	Desinfection kit for ultra pure water system (3 syringes)	W5
W3T525926	Adapter cable 5pol to RS 232 for printer interface	W5

CONSUMABLES

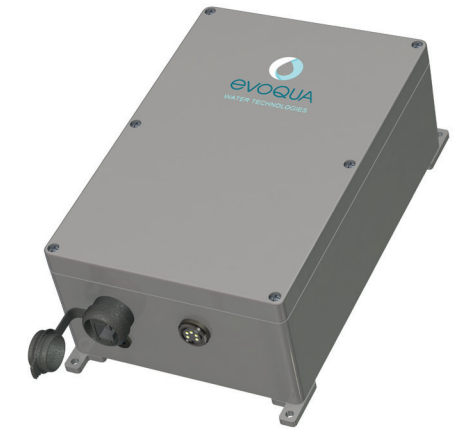
Polisher	TWF	TWF EDI	Consumable	Capacity
-	W3T197613		Pretreatment module AMB	W5
	W3T197621	-	DTO module	W5
-		W3T199848	Conditioning module	W5
	W3T197694		Polishing module MFIIID	W5
	W3T199209		0.2 µm Sterile filter (pack of 3)	W5
	W2T558521		UV replacement lamp (for UV reactor)	W5
-	W2T558519		UV replacement lamp	W5
-	W3T199197		CO2 vent filter CT1, replacement cartridge	W5
-	1 x W3T197620	2 x W3T197620	RO module	W5
	W3T197614		Ultrafiltration module (for UF systems only)	W5

SPECIFICATIONS

	Polisher	TWF	TWF EDI
Feed water			
Pressure (bar)	0.1 - 5	0.1 - 5	0.1 - 5
Conductivity (µS/cm)	< 20	< 2000	< 1400
CO2 (mg/l)	< 15	< 15	< 10
Silica (mg/l)	< 15	< 15	< 10
TOC (ppb)	< 50	-	-
Temperature (°C)	5 - 35	5 - 35	5 - 30
SDI	< 3	< 3	< 3
Free chlorine (mg/l)	< 0.1	< 0.1	< 0.1
Iron (mg/l)	< 0.1	< 0.1	< 0.1
Manganese (mg/l)	< 0.05	< 0.05	< 0.05
pH value	3 - 9	3 - 9	3 - 9
Pure water			
Flow rate (l/h)	-	10	20
Conductivity (µS/cm)	-	< 2	< 0,2
Ultra pure water			
Flow rate (l/min)	up to 2	up to 2	up to 2
Conductivity (µS/cm)	0.055	0.055	0.055
Resistivity (MΩ-cm)	18.2	18.2	18.2
TOC (ppb)	< 3	< 3	< 3
Bacteria (CFU/ml)	< 0.1	< 0.1	< 0.1
Particles > 0.2 µm/ml	< 1	< 1	< 1
Dimensions (W/H/D)			
System (mm)	340 x 535 x 550	340 x 535 x 550	340 x 535 x 550



Communication Interface Module



DATA TRANSFER MADE EASY

The new Communication Interface Module (Gateway) is the interface between your Evoqua water treatment system and your Building Management System (BMS), or a PC/laptop through an Ethernet network cable.

The gateway automatically detects which Evoqua water treatment system is connected, and establishes a permanent connection. The system continuously sends defined operating parameters via modbus TCP protocol.

BENEFITS

- Easy installation
- Convenient startup through an integrated web interface
- View all operating data at a glance, including conductivity values, error messages, operating hours, limit values, flow rates, etc.
- Simple remote diagnosis
- Maintenance-free
- 24/7 operation
- Compatible with the following
- Evoqua water treatment systems: All LaboStar, Ultra Clear, and Protegra systems
- Older water treatment water systems can be upgraded depending on the type

MODULE SETS - SAVE 15%

Evoqua's specially priced package deals will save you 15% over single priced items!

The module sets can be used in different Evoqua Lab Water Purification Systems:

Module Set Polisher:

1 x W3T197621 Pretreatment module DTO

1 x W3T197694 Polishing module MFIID

Part No: W3T521275

The Module Set Polisher can be used in all ultra pure water systems: LaboStar™ Pro UV and Ultra Clear™ UV Systems (purified water feed).

Module Set TWF:

1 x W3T197613 Pretreatment module AMB

1 x W3T197621 Pretreatment module DTO

1 x W3T197694 Polishing module MFIID

Part No: W3T521276

The Module Set TWF can be used in all ultra pure water systems: Ultra Clear™ TWF UV Systems without EDI (tap water feed).



TECHNICAL DATA

Part No: W3T428768

Parameter	Unit	
Dimensions (W/H/D)	mm	160 x 240 x 90
Power connection (voltage/frequency)	V(AC)/Hz	90...264 VAC N/PE 50/60 Hz
Max. power consumption (power supply unit)	W	230 V AC : max.276 W
Electrical connection (cable length 2 m)	-	Type F (DE), Type G (UK), NEMA Type B (USA)
IP protection class	IP 65	only when connected



LaboStar RO DI

Pure water systems

LABOSTAR® RO DI

The LaboStar RO DI water treatment system continuously produces pure water from softened or hardness-stabilised drinking water by means of reverse osmosis and a downstream mixed-bed ion exchanger. Its conductivity is up to 0.1 µS/cm. **Low-energy membranes** are used, making operation particularly efficient and economical. The unit contains a **7 l storage tank**.



LaboStar RO DI with 60 l tank



Degassing unit

Part No.	Name	P. Gr.
W3T324493	LaboStar 10 RO DI with 7 l tank and product water pump 1.2 l/min.	W3

ACCESSORIES

W3T403968	Flushing filter / Backflow preventer combi 3/4"	W5
W2T828181	Water guard G3/4" i/a, MS, KV 1.2 m³/h, 230 V	W5
W3T199556	Wall bracket kit for LaboStar	W5
W3T197552	CO2 trap CT1 with Vent filter VT1 kit	W5
W3T324494	30 l storage tank for LaboStar RO DI and PRO TWF	W5
W3T324495	60 l storage tank for LaboStar RO DI and PRO TWF	W5
W3T199991	Wall bracket for 30 l tank	W5
W3T197563	Wall bracket for 60 l tank	W5
W3T314413	Degassing unit up to max. 150 l/h*	W5
W3T199279	Sterile filter 0.2 µm with endotoxin retention, pack of 3	W5
W3T199209	Sterile filter 0.2 µm, pack of 3	W5
W3T428768	Communication interface module (LAB)	W5

*: Has to run in combination with a filter housing including filter cartridge.

CONSUMABLES

W3T197613	Pretreatment module AMB	W5
W3T197620	RO module 10 l/h	W5
W3T197618	Pretreatment module VMD for low inorganic application	W5
W3T199880	Vent filter for tank, pack of 3	W5

SPECIFICATIONS

	LaboStar 10 RO DI
Feed water	
Demand (l/h)	14 - 20
Input pressure (bar)	0.1 - 5
Temperature (°C)	5 - 30
Conductivity (µS/cm)	< 2000
CO ₂ (mg/l)	< 20
SDI	< 3
Total iron (mg/l)	< 0.1
Free chlorine (mg/l)	< 0.1
Product	
Permeate capacity at 15 °C (l/h)	10
Permeate capacity at 20 °C (l/h)	11
Permeate capacity at 25 °C (l/h)	13
Salt retention RO min. (%)	98 - 99
Yield (%)	30
Pure water quality (µS/cm)	< 0.1
Bacteria retention (%)	> 99
Bacteria* (KBE/ml)	< 1
Particle retention (%)	> 99
Particle > 0.2 µm* per ml	< 1
Bacteria count reduction (%)	> 95
Germ content (KBE/ml)	< 10
Flow rate dispenser (l/min)	up to 1.2
Delivery flow rate at 0.5 bar (l/h)	70
Delivery flow rate at 1.0 bar (l/h)	65
Technical data	
Operating pressure, max. (bar)	6
Power consumption, max. (W)	184
Power supply	100 - 240 V/50 - 60 Hz

* only when a 0.2 µm sterile filter is used



IONPURE®

Ultra Clear RO/RO DI/RO EDI

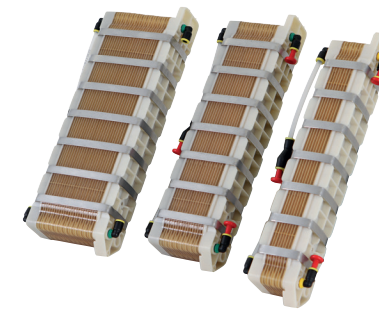
Pure water systems

ULTRA CLEAR™ RO, RO DI AND RO EDI

Ultra Clear RO: This system is used to produce pure water from softened or hardness-stabilised drinking water. The product water is produced by the process of reverse osmosis and removes **more than 98%** of the constituents contained in the feed water.

Ultra Clear RO DI: This system **deionises** (DI) the RO water in a further step and frees it from salts and remaining particles.

Ultra Clear RO EDI: The systems with electro-deionisation cell remove remaining salts from the permeate from reverse osmosis by ion exchange.



EDI cells



Modules

REVERSE OSMOSIS SYSTEMS ULTRA CLEAR RO SERIES

W3T441745	Ultra Clear RO 20	W3
W3T441746	Ultra Clear RO 30	W3
W3T199978	Ultra Clear RO 60	W3
W3T198158	Ultra Clear RO 100	W3
W3T441747	Ultra Clear RO DI 20	W3
W3T441748	Ultra Clear RO DI 30	W3
W3T324496	Ultra Clear RO EDI 10	W3
W3T441749	Ultra Clear RO EDI 20	W3
W3T441750	Ultra Clear RO EDI 30	W3

ACCESSORIES

W3T314413	Degassing unit up to max. 150 l/h*	W5
W3T428768	Communication interface module (LAB)	W5

*: Has to run in combination with a filter housing including filter cartridge.

CONSUMABLES

W3T197613	Pretreatment module AMB	W5
W3T197620	RO module 10 l/h + 20 l/h for Ultra Clear RO 10 and RO 20	W5
W3T439875	RO module HP, 98%, 15 l/h	W5
W3T439041	2 x 10 l/h RO module retrofit kit Ultra Clear RO 20	W5
W3T439913	2 x 15 l/h RO module retrofit kit Ultra Clear RO 30	W5
W3T197580	RO module Ultra Clear RO 20 up to Ultra Clear RO 100 and Ultra Clear EDI 55	W5
W3T197618	Pretreatment module VMD for inorganic application	W5
W3T199848	Conditioning module	W5

TESTKITS

W2T870161	Testkit Carbon dioxide	W5
W2T870160	Testkit Silica	W5

HOW TO ORDER MODULES

W3T441745	Ultra Clear RO 20	2 x W3T197620
W3T441746	Ultra Clear RO 30	2 x W3T439875
W3T199978	Ultra Clear RO 60	3 x W3T197580
W3T198158	Ultra Clear RO 100	5 x W3T197580
W3T441747	Ultra Clear RO DI 20	2 x W3T197620
W3T441748	Ultra Clear RO DI 30	2 x W3T439875
W3T324496	Ultra Clear RO EDI 10	1 x W3T197620
W3T441749	Ultra Clear RO EDI 20	2 x W3T197620
W3T441750	Ultra Clear RO EDI 30	2 x W3T439875
W3T198868	Ultra Clear RO EDI 55 bipolar	2 x W3T197580

SPECIFICATIONS, FEED WATER

Ultra Clear RO	20	30	60	100	20 DI	30 DI	EDI 10	EDI 20	EDI 30
Pressure (bar)	0.1 - 5.0		2.0 - 6.0		0.1 - 5.0				
max. flow (l/h)	50	75	154	205	50	75	30	60	75
Conductivity (µS/cm)	< 2000				< 1400				
Free chlorine (mg/l)	< 0.1								
CO ₂ (mg/l)	< 15		< 20		< 15				
SDI	< 3								
SiO ₂ (mg/l)	< 15								
Iron (mg/l)	< 0.1								
Manganese (mg/l)	< 0,05								
Temperature (°C)	5 - 35						5 - 30		



30 l tank

ULTRA CLEAR™ RO TANKS

The storage tank **with built-in stainless steel pump** is designed to store permeate or pure water. To control the water production, the tank must be connected to a water treatment system. The filling is controlled with a pressure sensor. The tank is UV-resistant and can be used in the food industry. The sizes **30, 60 and 80 l** are available.



60 l tank



80 l tank

TANKS WITH CONICAL BOTTOM COMPLETELY DRAINABLE INCL. LEVEL CONTROL

W3T324512	Ultra Clear RO tank 30 l with level sensor 4-20 mA	W3
W3T324513	Ultra Clear RO tank 60 l with level sensor 4-20 mA	W3
W3T355215	Ultra Clear RO tank 60 l with level sensor 4-20 mA; pump 1.5 l/min 2 bar	W3
W3T324515	Ultra Clear RO tank 80 l with pump 8 l/min 4-20 mA*	W3
W3T324514	Ultra Clear RO tank 80 l with pump 1.2 l/min 4-20 mA*	W3
W3T197510	Ultra Clear RO tank 80 l with pump 8 l/min 4-20 mA**	W3
W3T197526	Ultra Clear RO tank 80 l with pump 1.2 l/min 4-20 mA**	W3

*: for systems starting with W3T3... or W3T4...

** : for systems starting with W3T1...

ACCESSORIES FOR ULTRA CLEAR RO TANKS

W3T197552	CO ₂ trap CT1 with Vent filter VT1 kit for 30 + 60 l tanks	W5
W3T199596	Vent filter VT1 kit for 30 + 60 l tanks	W5
W3T324529	UV kit for Ultra Clear 30 + 60 l tank systems	W5
W3T339714	CO ₂ /UV kit for Ultra Clear 30 l tank	W5
W3T339715	CO ₂ /UV kit for Ultra Clear 60 l tank	W5
W3T339723	Vent filter/UV kit for Ultra Clear 30 l tank	W5
W3T339724	Vent filter/UV kit for Ultra Clear 60 l tank	W5
W3T199991	Wall bracket for 30 l tank	W5
W3T197563	Wall bracket for 60 l tank	W5
W3T199837	CO ₂ trap CT1, incl. Vent filter VT1 for 80 l tank	W5
W3T199881	Vent filter VT1 for 80 l tank	W5
W3T199615	UV-SL8 immersion lamp with ballast until yoc 2015 for 80 l tank	W5
W3T339692	UV kit for Ultra Clear 80 l tank systems	W5

CONSUMABLES FOR ULTRA CLEAR RO TANKS

W3T199197	CO ₂ trap CT1, replacement cartridge	W5
W2T526554	Vent filter VT1, replacement filter	W5
W2T558519	UV replacement lamp for 30 + 60 + 80 l tank (after 2014)	W5
W3T199748	UV replacement lamp for 30 l tank (until 2014)	W5
W3T199284	UV replacement lamp for 60 l tank (until 2014)	W5
W3T197514	UV replacement lamp for 80 l tank (until 2014)	W5

TECHNICAL DATA

	Size	Material	Dimensions W x H x D (mm)	Product water		
				Connection	Flow rate (l/m)* max. pressure (bar)	
W3T324512	30 l	PE	300 x 770 x 310	G 3/4" a	without pump	
W3T324513	60 l	PE	560 x 770 x 310			
W3T355215	60 l	PE		3/8" push-in G 3/4" a (press.less)	1.9	2.5
W3T324515	80 l	PE	340 x 1110 x 590	G 3/4" a	8,0	3
W3T324514	80 l	PE			1,2	3
W3T197510	80 l	PE			8,0	3
W3T197526	80 l	PE			1,2	3

*: bei 0 bar back pressure



Twin tank softeners

Single softener

Softeners

These fully automatic, time-controlled single-tank or volume-controlled double softeners are ideal for **upstream connection before reverse osmosis systems** for constant availability of soft water with low salt and water consumption. Due to the different models, even low volume flows can be detected.

SINGLE SOFTENER CABINET

W3T525253	Single softener, 36 LPM, cabinet	W7
-----------	----------------------------------	----

DOUBLE SOFTENER CABINET

W3T380538	DUO-08 LF, Dual softener*	W7
W3T198539	DUO-20, Dual softener*	W7
W3T198140	DUO-20 LF, Dual softener*	W7
W3T198803	DUO-35, Dual softener*	W7
W3T199864	DUO-35 LF, Dual softener*	W7

TWIN TANK SOFTENER

W3T197538	VM 60, Dual softener*	W7
W3T198842	VM 100, Dual softener*	W7
W3T198540	VM 200, Dual softener*	W7
W3T199867	VM 300, Dual softener*	W7

in combination with a filter housing and filter cartridge

REGENERATING SALT

W2T524662	Regenerating salt Broxo bag 25 kg	W7
W2T526793	Regenerating salt 10 kg only for W3T380538	W7

ACCESSORIES FOR SOFTENERS

W2T524727	Total hardness test strips (°dH) GH-I; 15 ml	W7
W2T524701	Hardness testing device SG 298 S, ¾"	W5
W2T524569	Hardness testing device SG 298 S, 1"	W5
W2T524766	Hardness testing device Testomat 2000	W5
W3T315762	Installation kit for Testomat	W5
W2T524765	Residual hardness indicator 500 ml at 0.3°dH	W5

RO industry systems

ULTRA CLEAR™ RO 150 BASIC

The system is used to produce pure water from softened or hardness-stabilised drinking water. System components according to the latest state of development are used for water treatment. The product water is provided for pressureless feed into a **1000 l storage tank** with level monitoring.



Ultra Clear RO 150 Basic

Part. No.	Name	P. Gr.
W3T199618	Ultra Clear RO 150 Basic, incl. tank and booster pump, open frame version	W4

CONSUMABLES

W2T526933	Activated carbon filter	W5
-----------	-------------------------	----

SPECIFICATIONS

Ultra Clear RO 150 Basic	
Product water capacity (l/h)	150
Salt reduction rate (%)	95 ... 98
Bacteria reduction rate (%)	> 99
Particle reduction rate (%)	> 99
Operation pressure (bar)	6 ... 12
Operation and ambient temperature (°C)	5 ... 35
Input water connection	¾"
Product water connection	¾"
Power supply	230 V, 50 Hz
Input water requirements	
Pressure (bar)	2.0 ... 6.0
Flow rate (l/h)	300
Conductivity (µS/cm)	< 2000
Free chlorine (mg/l)	< 0.1
CO ₂ (mg/l)	< 20
Silt density index, SDI	< 3
Silica (mg/l)	< 15
Iron (mg/l)	< 0.1
Manganate (mg/l)	< 0,05
pH value	3 ... 9
Temperature (°C)	5 ... 35



Protegra Open Frame system (OF)

RO Industry systems

PROTEGRA OF

These open frame (OF) water treatment systems are used to produce pure water from softened drinking water from the public supply network. The pure water is produced by the reverse osmosis process. For the water treatment, system components are used according to the latest state of development.



Protegra OF 3000



Degassing unit

PROTEGRA OF REVERSE OSMOSIS SYSTEMS, OPEN FRAME VERSION

W3T269403	Protegra OF 200	W4
W3T314581	Protegra OF 500	W4
W3T314582	Protegra OF 750	W4
W3T314583	Protegra OF 1000	W4
W3T198160	Protegra OF 3000 8" elements	W4

ACCESSORIES

W3T428768	Communication interface module	W5
-----------	--------------------------------	----

CONSUMABLES

W2T526549	Fine filter cartridge 5 µm Big Blue	W5
W2T526545	Fine filter cartridge 5 µm	W5

ACCESSORIES FOR ULTRA CLEAR® RO BASIC AND PROTEGRA CS®

W3T262426	Degassing unit from 120 l/h up to max. 5000 l/h	W5
W3T313731	Sterile dead space sampling port; VA; Tri-Clamp	W5
W3T198808	Multimedia filter MH1; 1.0 m³/h, manual	W7
W3T198847	Multimedia filter MH2; 1.4 m³/h, manual	W7
W3T199872	Activated carbon filter AH1, 1.0 m³/h, manual	W7
W3T197548	Activated carbon filter AH2, 1.4 m³/h, manual	W7
W3T255800	Compact dosing system for antiscalant / Sodium hydroxide	W7
W3T428768	Communication interface module (LAB)	W5

CONSUMABLES PROTEGRA CS® RO EDI REVERSE OSMOSIS/EDI COMBINATIONS

W2T526933	Activated carbon/Fine filter cartridge ACB	W5
W2T526551	Fine filter cartridge 5 µm Big Blue	W5

TESTKITS

W2T870161	Testkit Carbon dioxide	W5
W2T870160	Testkit Silica	W5

Additional accessories are available on request.

SPECIFICATIONS

	200	500	750	1000	3000
Product water					
Pure water production at 15 °C (l/h)	200	500	750	1000	3000
Salt retention rate (%)	> 98				
Bacteria and particle retention rate (%)	> 99				
Max. yield (%)	75				
System					
Input water connection (Inch)	3/4 BSP MPT	1 1/4	1 1/4	1 1/4	1 1/2
Output concentrate connection (Inch)	3/4 BSP MPT	1	1	1	1 1/2
Product water connection (Inch)	3/4 BSP MPT	1	1	1	1 1/2
Operating pressure, max. (bar)	14	14	14	14	14
Power supply (V/Hz)	230/50	3 x 400/50	3 x 400/50	3 x 400/50	3 x 400/50
Input water requirements					
Pressure (bar)	2.0 - 6.0	2.0 - 6.0	2.0 - 6.0	2.0 - 6.0	2.5 - 6.0
Flow rate (m³/h)	0.4	0.85	1.00	2.00	5.00
Conductivity (µS/cm)	< 2000				
Free chlorine (mg/l)	< 0.1				
CO ₂ (mg/l)	< 20				
Silt density index, SDI	< 3				
Langelier index	< 0				
Silica (mg/l)	< 15				
Iron (mg/l)	< 0.1				
Manganese (mg/l)	< 0.05				
pH value	3 - 9				
Temperature (°C/°F)	5 - 30/45 - 90				



Protegra CS RO Cabinet system

RO industry systems

PROTEGRA CS® RO

These systems are used to produce **200 - 1000 l/h pure water** from softened drinking water. The pure water is produced by a reverse osmosis process and fed into a tank. This tank filling process is controlled by a pressure sensor. You will find a selection of tanks from page 24 onwards.

PROTEGRA CS® REVERSE OSMOSIS SYSTEMS, CABINET VERSIONS

W3T199617	Protegra CS RO 200	W4
W3T197521	Protegra CS RO 500	W4
W3T199222	Protegra CS RO 750	W4
W3T199821	Protegra CS RO 1000	W4

CONSUMABLES PROTEGRA CS® RO REVERSE OSMOSIS/EDI COMBINATIONS

W2T526933	Activated carbon/Fine filter cartridge ACB	W5
W2T526551	Fine filter cartridge 5 µm Big Blue	W5

INPUT WATER REQUIREMENTS

Protegra CS RO	200	500	750	1000
Pressure (bar)	2.0 - 6.0			
Flow rate (m ³ /h) at 15°C	0.27	0.67	1.0	1.33
Conductivity (µS/cm)	< 2000	< 2000	< 2000	< 900
Free chlorine (mg/l)	< 0,1			
CO ₂ (mg/l)	< 20			
Silica (mg/l)	< 15			
Iron (mg/l)	< 0,1			
Manganese (mg/l)	< 0.05			
pH value	3 - 9			
Temperature (°C)	5 - 35			

TECHNICAL DATA

Protegra CS RO	200	500	750	1000
Operation pressure (bar)	14			
Energy consumption (kW/h)	0.55	1.3	1.8	2.3
Power supply	230 V, 50 Hz	3 x 400 V, 50 Hz	3 x 400 V, 50 Hz	3 x 400 V, 50 Hz
Fuse	16 A			
Dimensions, H x W x D (mm)	1650 x 600 x 550			
Weight (kg)	120	140	172	192

PROTEGRA CS® PRO RO EDI

The Protegra CS® Pro RO EDI system is a high-performance solution for deionized water applications. Equipped with industry-leading reverse osmosis technology and a **high-performance Ionpure® CEDI cell**. The system is ideal for a range of laboratory and industrial applications with a typical water quality of > 0.07 µS/cm and flow rates **up to 1000 l/h** at 15°C.



Protegra CS Pro RO EDI Cabinet system

PROTEGRA CS® PRO RO EDI REVERSE OSMOSIS SYSTEMS

W3T553431	Protegra CS PRO RO EDI 125	W4
W3T553432	Protegra CS PRO RO EDI 250	W4
W3T553433	Protegra CS PRO RO EDI 500	W4
W3T553434	Protegra CS PRO RO EDI 750	W4
W3T587432	Protegra CS PRO RO EDI 1000	W4

ACCESSORIES AND CONSUMABLES PROTEGRA CS® / CS® PRO SERIES

W3T307039	LED signal light (red, yellow, green)	W5
W3T570885*	Communication interface (Modbus Gateway)	W5
W3T262426	Degassing unit	W5
W2T526933	Activated carbon/Fine filter cartridge ACB	W5
W2T526551	Fine filter cartridge 5 µm Big Blue	W5

*: for Protegra CS Pro only

INPUT WATER REQUIREMENTS

Protegra CS PRO RO EDI	125	250	500	750	1000
Pressure (bar)	2.5 - 6	2.5 - 6	2.5 - 6	2.5 - 6	2.5 - 6
Conductivity (µS/cm)	< 1400	< 1400	< 1400	< 1400	< 1400
SDI	< 3	< 3	< 3	< 3	< 3
Free chlorine (mg/l)	< 0.1	< 0.1	< 0.1	< 0.1	< 0.1
CO ₂ (mg/l)	< 10	< 10	< 10	< 10	< 10
Silica (mg/l)	< 10	< 10	< 10	< 10	< 10
Iron (mg/l)	< 0.1	< 0.1	< 0.1	< 0.1	< 0.1
Hardness (ppm)	< 1	< 1	< 1	< 1	< 1
Temperature (°C)	5 - 30	5 - 30	5 - 30	5 - 30	5 - 30

TECHNICAL DATA

Protegra CS PRO RO EDI	125	250	500	750	1000
Energy consumption (kW)	1.0	1.2	2.1	3.0	3.0
Power supply	3/N/PE 400 VAC 50/60 Hz				
Dimensions, H x W x D (mm)	1795 x 650 x 545		1795 x 650 x 665		1795 x 650 x 780
Mounting	Wheels	Wheels	Feet	Feet	Feet
Shipping weight (kg)	165	180	265	275	295



Storage tanks

Storage tanks

The polyethylene storage tanks store the permeate or pure water from the connected reverse osmosis systems. They are equipped as **standard with a pressure sensor** that can control the operating state of the pure water system depending on the fill level.

Part No.	Name	P. Gr.
Storage tanks incl. level sensors 4 - 20 mA (L x W x H)		
W3T199977	100 l, 450 x 810 mm	W4
W3T199996	200 l, 550 x 1040 mm	W4
W3T197508	300 l, 650 x 1080 mm	W4
W3T198133	500 l, 770 x 1230 mm	W4
W3T198836	750 l, 720 x 720 x 1700 mm	W4
W3T198753	1000 l, 780 x 780 x 1940 mm	W4
W3T199591	1650 l, 2085 x 720 x 1400 mm	W4
W3T199890	2000 l, 2180 x 720 x 1700 mm	W4
W3T199834	3000 l, 2230 x 850 x 2200 mm	W4

TECHNICAL DATA

Part No, Tank system	W3T199977	W3T199996	W3T197508	W3T198133	W3T198836	W3T198753	W3T199591	W3T199890	W3T199834
Part No, Tank.	W2T524194	W2T524182	W2T524192	W2T524203	W2T524190	W2T524184	W2T524266	W2T524180	W2T524307
Content (l)	100	200	300	500	750	1000	1650	2000	3000
Input (AG)	3/4"	3/4"	3/4"	3/4"	3/4"	3/4"	3/4"	3/4"	3/4"
Output (DN)	25	25	25	25	25	25	25	25	25
Overflow (DN)	25	25	25	25	32	32	40	40	40
Hand hole*	160	160	160	160	230	230	400	450	400
Diameter*	460	565	660	780					
Width*	610	700	785	920	800	800	730	730	900
Hight*	850	1060	1140	1270	1540	1930	1400	1730	2100
Depth*	610	670	790	890	910	910	2200	2200	2500

*: in mm



Booster pump Grundfos Mono CMBPE



Booster pump Grundfos Scala 2

ACCESSORIES FOR STORAGE TANKS

W3T198123	Vent filter VT2 (up to 1500 l/h)	W5
W3T198126	CO2 trap CT2, incl. Vent filter (Installation kit, up to 1500 l/h)	W5
W3T197784	CO2 trap, incl. Vent filter (Installation kit, up to 3000 l/h, external)	W5
W3T197583	Surge chamber D32	W5
W3T197752	Surge chamber D40 for two storage tanks	W5
W3T359447	Level sensor for Protegra OF systems	W5
W3T199393	Level sensor kit 200 mbar 3.5 m for ≥ 80 l tank*	W5
W3T348642	Level sensor kit 200 mbar 3.5 m for ≤ 100 l tank* ²	W5
W3T430939	Level sensor adapter cable RJ45/12 pol for Protegra OF systems	W5
W3T348882	Cable tank control 6/12 pol UC RO/tank* ³	W5
W3T375796	Cable tank control 12/6 pol UC RO/tank* ⁴	W5
W3T394182	Tank adapter cable system 2 to 4 pol UV* ⁵	W5
W3T582047	Tank level sensor connection cable for Protegra CS RO PRO 3.5 m	W5
W3T582048	Tank level sensor connection cable for Protegra CS RO PRO 10.0 m	W5

*: for control of reverse osmosis systems starting with W3T1...

*²: for control of reverse osmosis systems starting with W3T3... or W3T4...

*³: for W3T3... or W3T4... systems, that content a tank with integrated level sensor (W3T1...)

*⁴: for control of reverse osmosis systems starting with W3T1...; Tanks starting with W3T3.

*⁵: for control of reverse osmosis systems starting with W3T1...; Tanks (with integrated UV lamp) starting with W3T3.

CONSUMABLES FOR STORAGE TANKS

W2T526553	Vent filter VT2, replacement cartridge for # W3T198123	W5
W3T197551	CO ₂ trap CT2 incl. Vent filter, replacement cartridge for # W3T198126	W5
W3T198407	CO ₂ trap, replacement cartridge for # W3T197784	W5
W2T525174	Vent Filter, replacement filter for # W3T197784	W5

BOOSTER PUMP WITH PRESSURE CONTROL

W3T390454	Booster pump Grundfos Scala 2, 0.5 - 4.0 m ³ /h, 1.6 - 4.4 bar	W5
W2T812009	Booster pump Grundfos Mono CMBE 3 - 93, 1.1 - 4.5 m ³ /h, 6.2 - 9.8 bar	W5

ACCESSORIES FOR BOOSTER PUMP GRUNDFOS

W3T344789	Installation kit Grundfos Mono	W5
-----------	--------------------------------	----

Additional accessories are available on request.



Redundancy circuits
W3T388558
and W3T241943

Redundancy circuit
W3T432407

Redundancy circuits

The redundancy circuit manages the operation of **two Protegra systems connected in parallel** with tank, level measurement and booster pumps and Q3 discharge, as well as warnings, pressure, starting and stopping of the systems and conductivity. Permeate production is alternated through both RO systems. If the tank level falls below the value of 50 %, the second system is switched on. This value is adjustable..

W3T388558	for Protegra CS RO EDI 120, 400 V	W4
W3T241943	for 2 Protegra systems, 3 x 400 V	W4
W3T432407	for 2 Protegra systems, 3 x 400 V	W4

TECHNICAL DATA

	W3T241943	W3T388558	W3T432407
Voltage	3 x 400 V	3 x 400 V	3 x 400 V
Voltage pumps	1 x 230 V	3 x 400 V	3 x 400 V
Pump types	regulated/ unregulated	regulated/ unregulated	regulated/ unregulated
Analogue outputs possible	2	4	4
Analogue outputs available	0	4	4
Start signal via level sensor	yes	yes	yes
Start signal via ext. signal	no	no	no
Collective error X18 available	x	x	x
Hardness error message X17	-	x	-
EA boards	1	2	2
Motor protection switch	2.5-4 A	2.5-4 A	6.3-10 A
System A/B fault from external	x	x	x
Pump A/B fault from external	x	x	x
Pumps/RO fault on external	-	-	x
System A/B fault on external	-	-	x
Pump A/B fault on external	-	-	x
Function pumps external	x	x	x
Function pump station	x	x	x
Flow measurement "Loop"	x	x	x
Temp. measurement "Loop"	x	x	x
Conductivity measurement "Loop"	x	x	x
Dual RO	x	x	x
Discard Tank/Loop	x	x	x
Conductivity "feed water"	x	x	x
Common alarm	x	x	x

Submersible lamps

The UV lamp emits biocidal UV light without shadows. Depending on the device version, it is suitable for **disinfecting** round or rectangular containers up to a volume of 3 m³. The UV immersion lamp consists of a UV lamp, the surrounding protective tube and a centring weight.



Submersible lamp

UV DISINFECTION, SUBMERSIBLE LAMPS FOR STORAGE TANKS

W3T198141	Submersible UV lamp, 15 Watt up to 1000 l	W5
W3T199833	Submersible UV lamp, 18 Watt up to 2000 l	W5
W3T197502	Submersible UV lamp, 38 Watt up to 3000 l	W5

UV REPLACEMENT LAMPS FOR SUBMERSIBLE LAMP

W3T198394	UV replacement lamp, 15 Watt for W3T198141	W5
W3T198597	UV replacement lamp, 18 Watt for W3T199833	W5
W3T198599	UV replacement lamp, 38 Watt for W3T197502	W5

TECHNICAL DATA SUBMERSIBLE LAMP

Wave length (nm)	254		
Electrical power (W)	15	18	38
UV power at 254 nm	4	5,5	13
Lamp length (mm)	224	300	711
Tank volume, max. (m ³)	1	2	3
Supply voltage (V)	230		
Operating hours, max.	8000		



UV Disinfection system

UV flow lamps

This lamp is for the **disinfection of clear, colourless, iron- and manganese-free water**. The UV lamp in the pressure-resistant quartz tube is installed in an electropolished stainless steel housing. The control unit including the operating hours counter is installed in a separate plastic housing and connected to the UV lamp via a connecting cable.

UV DISINFECTION, FLOW REACTORS

W3T199855	UV 09, UV Disinfection system, 16 Watt, 300 - 900 l/h at 400 J/m ²	W5
W3T199588	UV 14, UV Disinfection system, 25 Watt, 900 - 1400 l/h at 400 J/m ²	W5
W3T199987	UV 33, UV Disinfection system, 36 Watt, 1400 - 3300 l/h at 400 J/m ²	W5
W2T831331	UV Reactor 2 m ³ /h 230 V/50 Hz	W5

REPLACEMENT LAMPS

W2T525543	Replacement lamp 16 W for W3T199855	W5
W2T525476	Replacement lamp 25 W for W3T199588	W5
W3T199832	Replacement lamp 36 W for W3T199987	W5
W2T852236	Replacement lamp for W2T831331	W5

UV SYSTEMS FOR TOC REDUCTION

W3T199989	UV Compact 06 TOC, 600 l/h, 25 Watt at 1200 J/m ²	W5
W3T199590	UV Compact 11 TOC, 1100 l/h, 36 Watt at 1200 J/m ²	W5
W3T199746	UV Compact 15 TOC, 1500 l/h, 36 Watt at 1200 J/m ²	W5
W3T199612	UV Compact 19 TOC, 1900 l/h, 60 Watt at 1200 J/m ²	W5
W3T197569	UV Compact 38 TOC, 3800 l/h, 170 Watt at 1200 J/m ²	W5
W3T199217	UV Compact 63 TOC, 6300 l/h, 170 Watt at 1200 J/m ²	W5

Replacement lamps are available on request.

Filters

FILTER HOUSINGS AND CARTRIDGES

Filter cartridges can be used for **pre-filtration**, for example for reverse osmosis systems. The replacement interval always depends on the quality of the input water.

Filter cartridges can be autoclaved up to six times to counteract contamination.



Filter housing

Cartridge filter groups

CARTRIDGE FILTER HOUSINGS WITH WALL BRACKET

W3T198845	Filter housing FG 5, Polypropylen blue	W5
W3T198183	Filter housing FG 10, Polypropylen blue	W5
W3T197545	Filter housing FG 10n, Polypropylen nature	W5
W3T197546	Filter housing FG 20, Polypropylen blue	W5
W3T198543	Filter housing FG 20n, Polypropylen nature	W5
W3T197917	Filter housing FG 10 Big Blue	W5
W3T198809	Filter housing FG 20 Big Blue	W5

CARTRIDGE FILTER GROUPS WITH WALL BRACKET

W3T203779	FG 10" x 2, 1 µm / 0.2 µm / 2 pressure gauges	W5
W3T197547	FG 20" x 2, 1 µm / 0.2 µm / 2 pressure gauges	W5
W3T198846	FG 10" x 2, ACB / 5 µm	W5
W3T197918	FG 20" x 2, ACB / 5 µm	W5
W3T198185	Activated carbon / 5 µm 10" Big Blue	W5
W3T197748	Activated carbon / 5 µm 20" Big Blue	W5

5" FILTER CARTRIDGES

W2T526552	Fine filter cartridge 1 µm	W5
W2T526534	Fine filter cartridge 5 µm	W5
W3T199755	Fine filter cartridge 20 µm	W5
W2T526541	Activated carbon / Fine filter cartridge GAC	W5

10" FILTER CARTRIDGES (W5)

W2T526539	Sterile filter cartridge 0.2 µm
W2T524613	Fine filter cartridge 1 µm
W2T526537	Fine filter cartridge 5 µm
W2T526551	Fine filter cartridge 5 µm Big Blue
W2T526540	Fine filter cartridge 20 µm
W2T526933	AC/Fine filter cartridge ACB
W2T526535	AC cartridge Big Blue

20" FILTER CARTRIDGES (W5)

W2T526544	Sterile filter cartridge 0.2 µm
W2T526550	Fine filter cartridge 1 µm
W2T526545	Fine filter cartridge 5 µm
W2T526536	AC/Fine filter cartridge 20", 1 µm/GAC
W2T526549	Fine filter cartridge 5 µm Big Blue

FILTER SYSTEMS

W3T198808	Multimedia filter MH1; 1.0 m ³ /h, manual	W7
W3T198847	Multimedia filter MH2; 1.4 m ³ /h, manual	W7
W3T199872	Activated carbon filter AH1; 1.0 m ³ /h manual	W7
W3T197548	Activated carbon filter AH2; 1.4 m ³ /h manual	W7

DOSING SYSTEMS

W3T255800	Compact dosing system for antiscalant/Sodium hydroxide	W7
-----------	--	----

Accessories

WATER PRETREATMENT

Backflow preventer: DIN/DVGW certified to protect drinking water from backflowing treated water.

Backflow and flushing filters: DIN/DVGW certified to protect the water from coarse particles and undissolved substances.



Backflow preventer



Flushing filter

RBACKFLOW PREVENTER DVGW CERTIFIED

W3T198541	Backflow preventer 1/2"	W5
W2T844283	Backflow preventer 3/4"	W5
W2T807752	Backflow preventer 3/4"	W5
W3T197542	Backflow preventer 3/4"	W5
W3T197915	Backflow preventer 1"	W5

BACKFLOW AND FLUSHING FILTER

W3T197916	Backflow fine filter, RSF 1, DVGW certified	W5
W2T844284	Flushing filter 3/4"	W5
W3T199871	Flushing filter 3/4"	W5
W2T526548	Flushing filter 1"	W5
W2T526934	Spare cartridge for flushing filter, pack of 2	W5

FLUSHING FILTER/BACKFLOW PREVENTER COMBI

W3T403968	Flushing filter/Backflow preventer combi 3/4"	W5
W3T304320	Flushing filter/Backflow preventer combi 3/4" and 1"	W5

TESTKITS

W2T870161	Testkit Carbon dioxide	W5
W2T870160	Testkit Silica	W5

Consumables

..FOR OLDER VERSIONS

For older water treatment systems (SG, Siemens) you will find here corresponding consumables.

If you request further items, please contact us.



Modules

CONSUMABLES FOR ALL LABOSTAR® SYSTEMS UNTIL APRIL 2015

W3T199208	Pretreatment module	W5
W3T199854	Polishing module HP1 for low inorganic application	W5
W3T199773	Polishing module HP2 for low organic application	W5
W3T198255	DI module	W5
W3T199951	UV replacement lamp	W5
W3T199880	Vent filter for tank, Pack of 3	W5
W3T199279	Sterile filter 0.2 µm with endotoxin retention, Pack of 3	W5
W3T199209	Sterile filter 0.2 µm, Pack of 3	W5
W3T199772	Bridging tube + 1 syringe filled with disinfection	W5

CONSUMABLES FOR OLDER ULTRA PURE WATER SYSTEMS

W2T526542	Sterile filter 0.1 µm, 1000 cm ² , Ultra Clear until 2016	W5
W3T199951	UV replacement lamp for Ultra Clear/LaboStar	W5
W3T199943	UV replacement lamp for Ultra Clear Integra UV/UF TM	W5
W3T199748	UV replacement lamp for 30 l tank, until 2014	W5
W3T199284	UV replacement lamp for 60 l tank, until 2014	W5
W3T198933	Activated carbon for RS-90	W5
W3T199450	Mixedbed cartridge for RS-90, Pack of 2	W5
W3T199449	Adsorber resin cartridge for RS-90	W5
W3T198433	Sterile filter 0.2 µm for RS-90-4 MF, RS-40	W5
W3T197810	Multifunctional cartridge MF III for RS-40	W5

TRANSFORMING
WATER
— ENRICHING —
LIFE

Delivery ex works, unpacked, excl. VAT.

For articles not mentioned in this list please contact us.

Returns

Goods from our standard product portfolio, whose return is not a result of error(s) on the part of Evoqua Water Technologies, should be returned for credit within 60 days from shipment. Should the goods be received in unused, "as new" saleable condition and in our original packing, we will issue a credit note for 80% of the original net price. After 60 days of the date of delivery, the goods can be offered for repurchase. Goods with a net value below € 25,00, products built to customer's specifications or other non-standard materials cannot be returned for credit or exchange. Returns have to be shipped by the customer to the designated Evoqua Water Technologies location on basis of the trade term DAP (Incoterms 2010). A Return Material Authorization (RMA) is required to accompany all goods returned to Evoqua Water Technologies.

Please contact us prior to any return of goods to initiate the return process.

Minimum order value 50,00€ net.



Fahrenberg 36, 22885 Barsbüttel, Germany

+49-8221-904-0 sales.lab.de@evoqua.com evoqua.com/lab-water

Errors excepted and subject to change without notice.

© 2023 Evoqua Water Technologies GmbH